

The equipment and skills of a competent gunsmith are required to properly and safely install these sights. All Aristocrat adjustable sights are intended only for use on target pistols. Installation on police or other service weapons is not recommended.

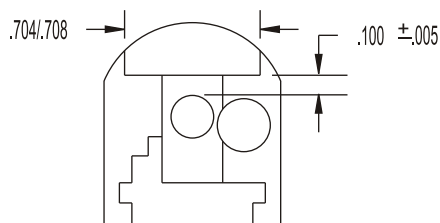
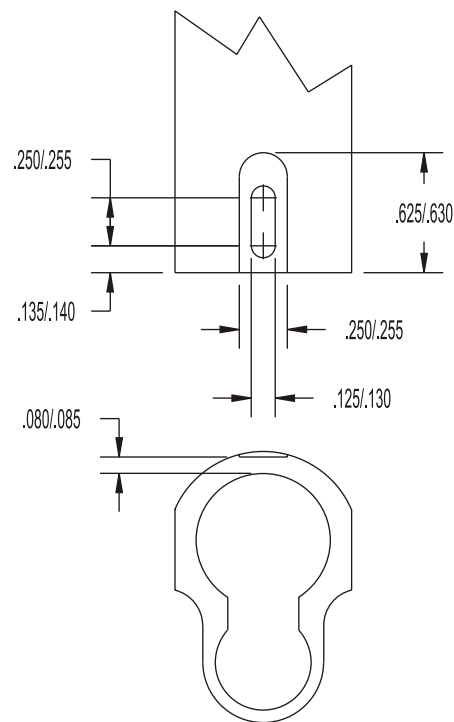
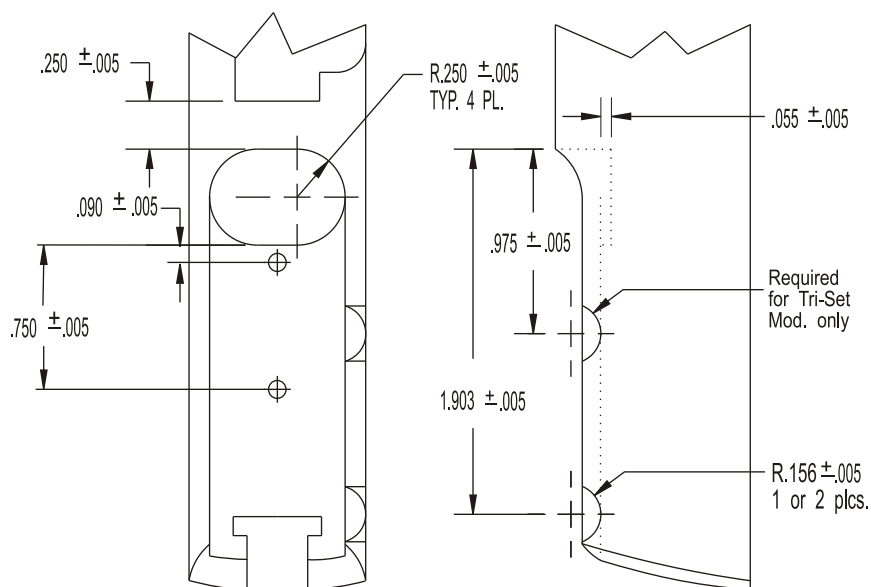
The following dimensions are intended only as guidelines. Final installation details are at the discretion and the responsibility of the gunsmith making the installation.

FRONT SIGHT MOUNTING

The cuts for the mounting of the front sight are designed to be made with standard .125 and .250 diameter end mills.

For normal swaged mounting it is necessary to chamfer the .125 slot inside the slide. This is easily accomplished with a small hand grinder.

If it is desired to silver solder the front sight in place, the .125 slot may be omitted and the stem of the front sight may be machined away.



REAR SIGHT MOUNTING

The cuts for mounting the rear sight are designed to be made with standard .500 and .312 diameter end mills. The mounting screw holes are 6-48 and may be "spotted" using the sight housing as a jig.

The recoil lug on the sight housing must be a snug fit with the pocket in the slide. The lug may be filed to fit if necessary.

After all milling and fitting is complete, temporarily mount the housing in place with the 6-48 flathead screws provided and check for protrusion into the firing pin hole.

Make certain that the mounting screws do not protrude into the firing pin hole. Protrusion of the screws into the hole can cause interference with the firing pin which may prevent firing or may hold the pin forward, which can cause an accidental discharge if the slide is closed on a live round!

While the mounting screws do not take the recoil in this design, it is very important that they do not loosen. Clean any oil from the tapped holes in the slide, the sight housing and the screws with a good solvent. **Apply "Loctite"** to the screw threads and tighten securely.

Install the sight leaf in the housing with the pivot pin, apply "Loctite" to the threads of the set screw provided and lock the pin securely in place. Make sure set screw is removed completely before installing or removing the pivot pin.

Aristocrat Products Inc.

1232 E. Edna Place
Covina, California 91724

Tel. (626) 339-4045 Fax (626) 339-4063

www.aristocratproducts.com / Email info@aristocratproducts.com